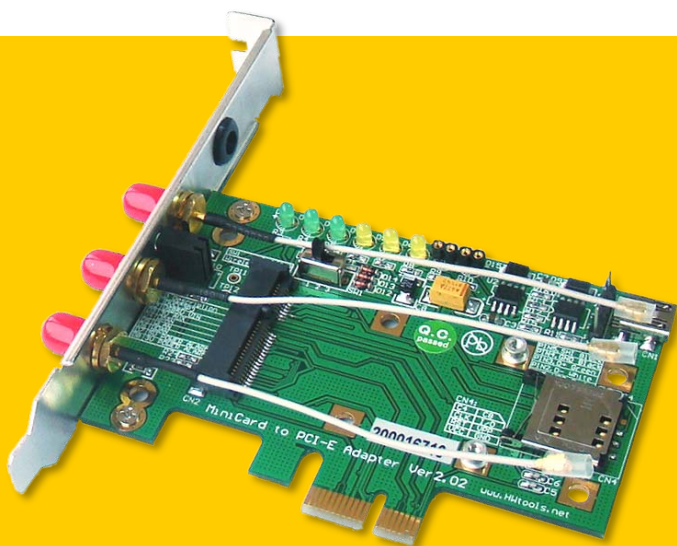


Mini PCI-E to PCI-E adapter ver2.03

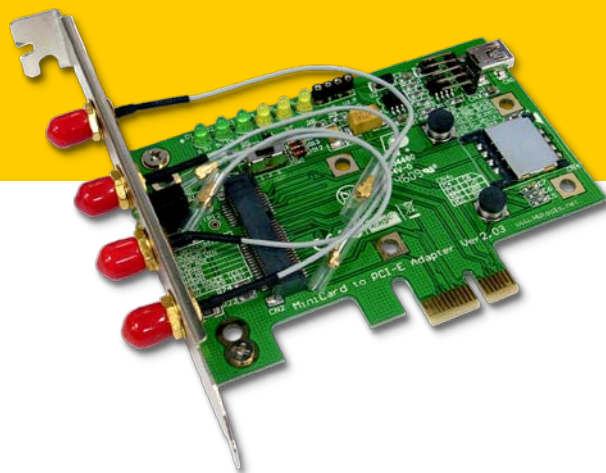
MP2A



The MP2A passive adapter is designed for desktop PCs that convert Mini-Card to USB port or standard PCI-Express 1x slot.

You can insert your USB type minicard to this adapter then plug to USB port through USB cable.

Or insert your PCI-E type mini-card into this adapter then insert to PCI-E 1x connector



Function:

- PCI Express Mini Card to PCI express 1x converter.
- Allows user to test PCI Express Mini modules on the PCI Express slot.
- Supports two primary system bus interface: PCI Express and USB.
- Supports all of Mini-Cards such as SSD, 3G,CDMA, WLAN,WWLAN, Mini Card to desktop PC.
- Supports U.FL/IPX to RP- SMA pigtail WiFi RF cable adapter. (Optional)



Specification:

- PCI Express Mini Card to PCI Express/USB adapter
- PCI Express Mini Card Electromechanical Specification Revision 1.2
- PCI Express Card Electromechanical Specification 1.1
- Universal Serial Bus Specification Revision 2.0
- Standard Height PCI Express Add-in Card
- Low Profile PCI Express Add-in Card
- Full/ Half -Mini Card dimension
- SIM Connector for CDMA HSDPA/HSUPA, UMTS, GSM, GPRS, EDGE
- Wireless Disable/Enable switch
- WPAN, WLAN, WWAN, VCC3, VCC5, VCCaux LEDs

System Requirements:

PCI-Express 1x slot and USB port
Windows 2000, XP, Vista 32/64, Linux

Package Contents:

Mini PCI-E / PCI-E adapter x1
USB 2.0 A Male to B Mini 5 Pin Cable x1
IPX to RP SMA cable x3
USB dupont 5PIN to dupont 5PIN cable x1
Low profile PCI express bracket x1
Standard Height PCI express bracket x1
Screw x2 Gasket x4

As a New manufacturer of quality computer connectivity products since 2009/Mar, BPLUS technology brings to market a broad range of upgrade products. These products bridge the connection between Desktop/Notebook systems and external peripherals.

Bplus
Bplus Technology

Address: 5F, NO. 63, ZHOU-TZYY
ST., NEI-HU, TAIPEI, TAIWAN, R.O.C
Tel: 886-2-77210550 Fax: 886-2-87974200
Email: sales@hwtools.net
Web: http://www.HWtools.net