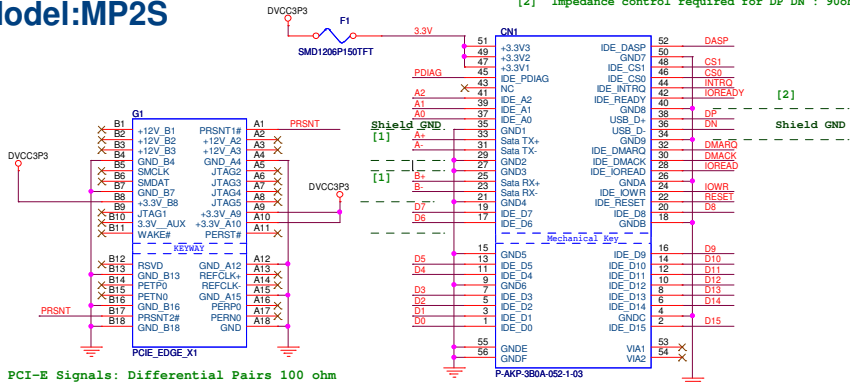


Custom PATA/SATA mPCIe SSD to PATA/SATA Adapter Ver1.0b

Model:MP2S

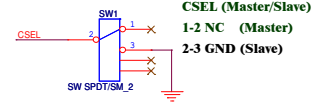
[1] Impedance control required for CLK+ CLK- PETXP PETXM PERXP PERXM : 100ohm
 [2] Impedance control required for DF DN : 90ohm



Revision History

Date	Version	Description
2009 Oct 07	1.0	First Release
2009 Nov 26	1.0b	Change LED schematic

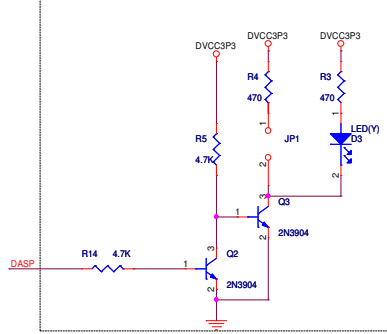
Notice: Almost SSD can't support slave mode, therefore SW1 should be ineffective.



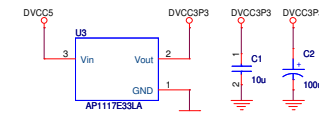
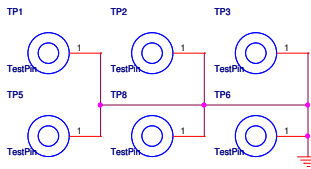
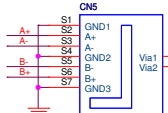
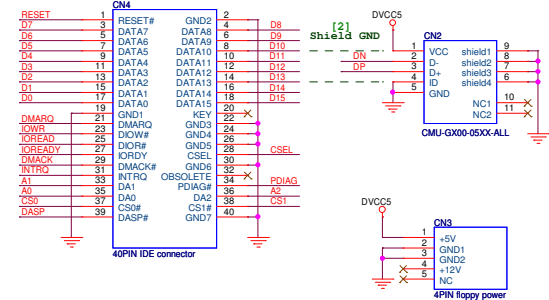
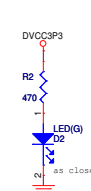
PCI-E Signals: Differential Pairs 100 ohm

Notices:
 The SSD module is controlled via the PATA interface to the main-board. And not the PCIe bus. It only requires power from the PCIe bus or Floppy connector.
 As a result PCIe connector existing nets on the PCB which are power connecting only.

Active LED



Power LED



Model:MP2S Ver: 1.0b			
File	Custom SATA/PATA mPCIe to SATA/PATA Adapter	by Gerry Chen	
Size	Document Number	MP2S	Bplus technology Co., Ltd.
Date:	Thursday, November 26, 2009	Sheet	1 of 1