

M.2 Key A Wireless Card to PCIe adapter MP8605A brief

The M.2 adapter is designed for Tri-Band Wireless-AC delivers high-speed, 60GHz WiGig (802.11ad) Bluetooth application on desktop PCs that convert M.2 Wireless Card to standard PCI-Express 1x

Also, Wireless & Bluetooth Combo M.2 card such as Intel® Tri-Band Wireless-AC 18260 can be used for supporting both Wireless-AC, Wireless-AD by PCIe and Bluetooth by USB at the same time.

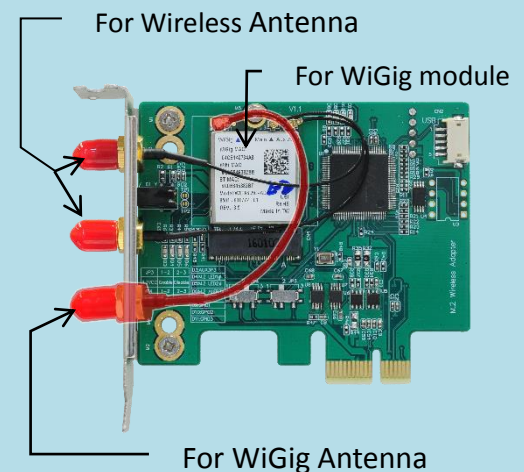
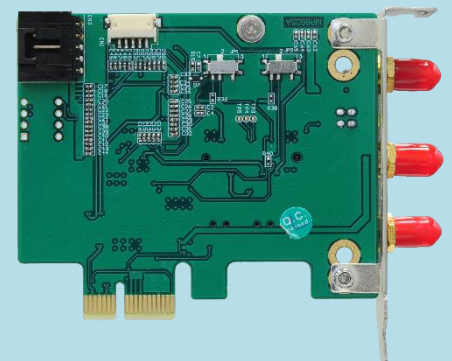
Specification

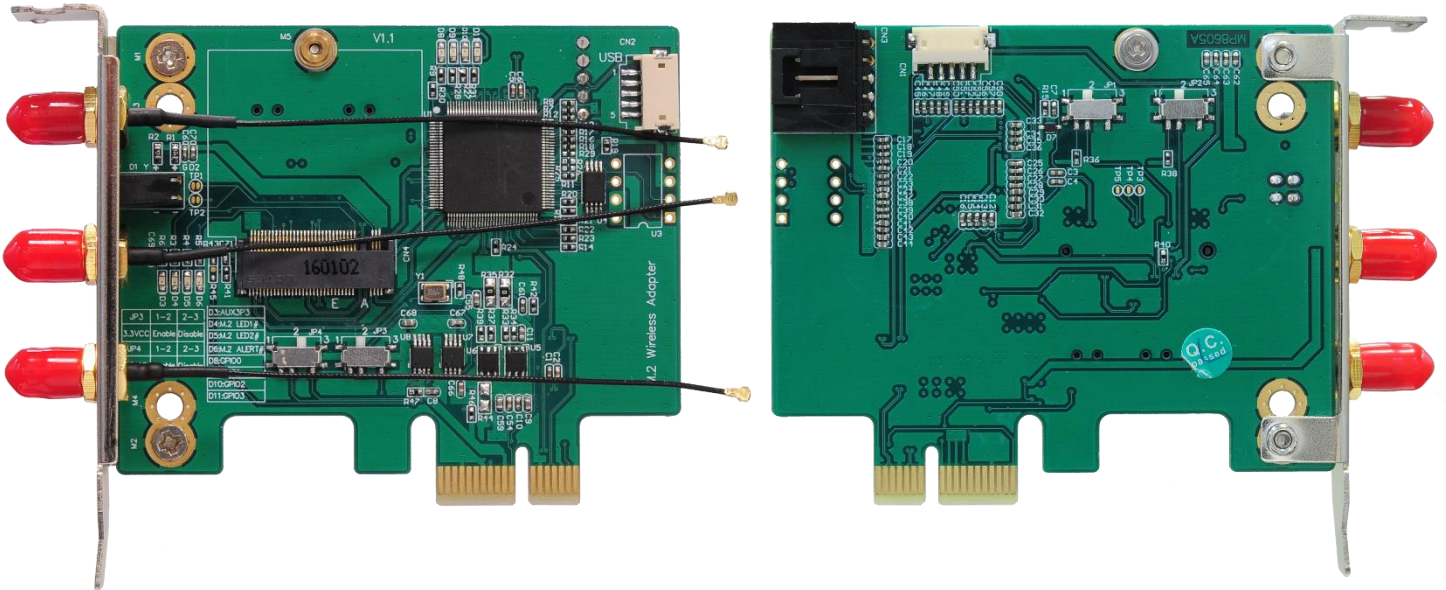
- PCB Dimension: 80 x 70 x 10 mm (L x W x H)
- Weight: 80g
- Operating temperature: 0° to +70° C
- M.2 Key A or A+E Card to PCI Express adapter
- Supports system bus interface: PCIe & USB2.0.
- Support PCIe M.2 Card 2230 / 3030Key A / A+E:
IEEE WLAN802.11a/b/g/n, 802.11d, 802.11e, 802.11i, 802.11h,
802.11ac, 802.11ad
- LED: STATUS, POWER, and ALERT#
- MHF4 to SMA / RP-SMA pigtail Wireless RF cable adapter
- MP8605A: Transparent to operating systems and does not require any software drivers
- Support M.2 Cards List
 - Intel® 17265NGW, 18265NGW
 - Qualcomm® Atheros W0096-AC+AD, Wilocity Wil6200

Notice:

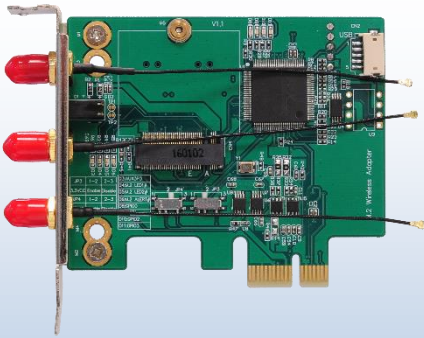
- *No driver CD accompanied.
- *Make sure you download and install the Wireless module's driver before you install the adapter.

MP8605A





MP8605A Package Contents



MP8605A x1
(M.2 Key A Wireless Card to PCIe adapter)



Y05-U09-060 x1
(Dupont 5PIN to dupont 5PIN USB cable)



JP0593 x1
(Standard Height PCI express bracket)



Gasket x2



Flat Head Screw x1

MP8605A Package Options



Intel® 17265NGW
Antenna-M 10041R



Intel® 18265NGW
Antenna-M 10101R



MHF4



MHF5



MHF5



MHF5

RF6A008B
MHF4 to MHF5 cable 8cm

RFAA008B
MHF5 to MHF5 cable 8cm