

Mini PCI-E Add-in card Media-Card Reader with RICOH R5U880: Model MR04

[REVISIONS HISTORY]

- 1st for internal checking 20080909
- 2nd for internal checking 20080910
- 3rd for internal checking 20080916

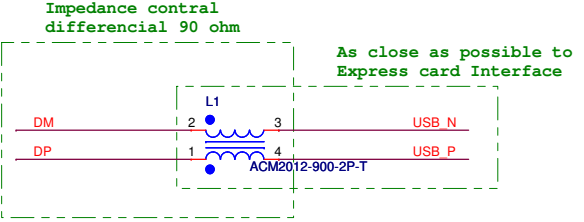
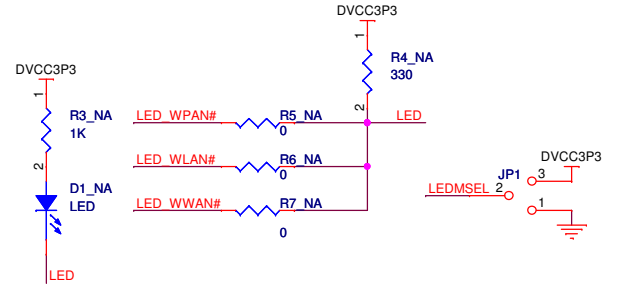
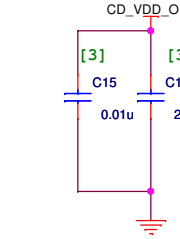
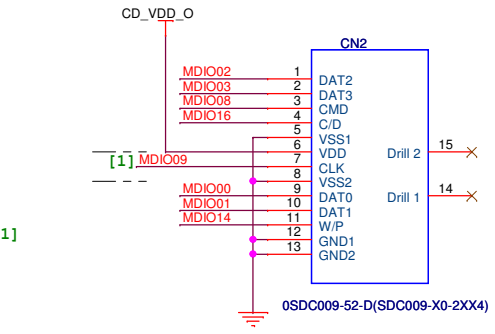
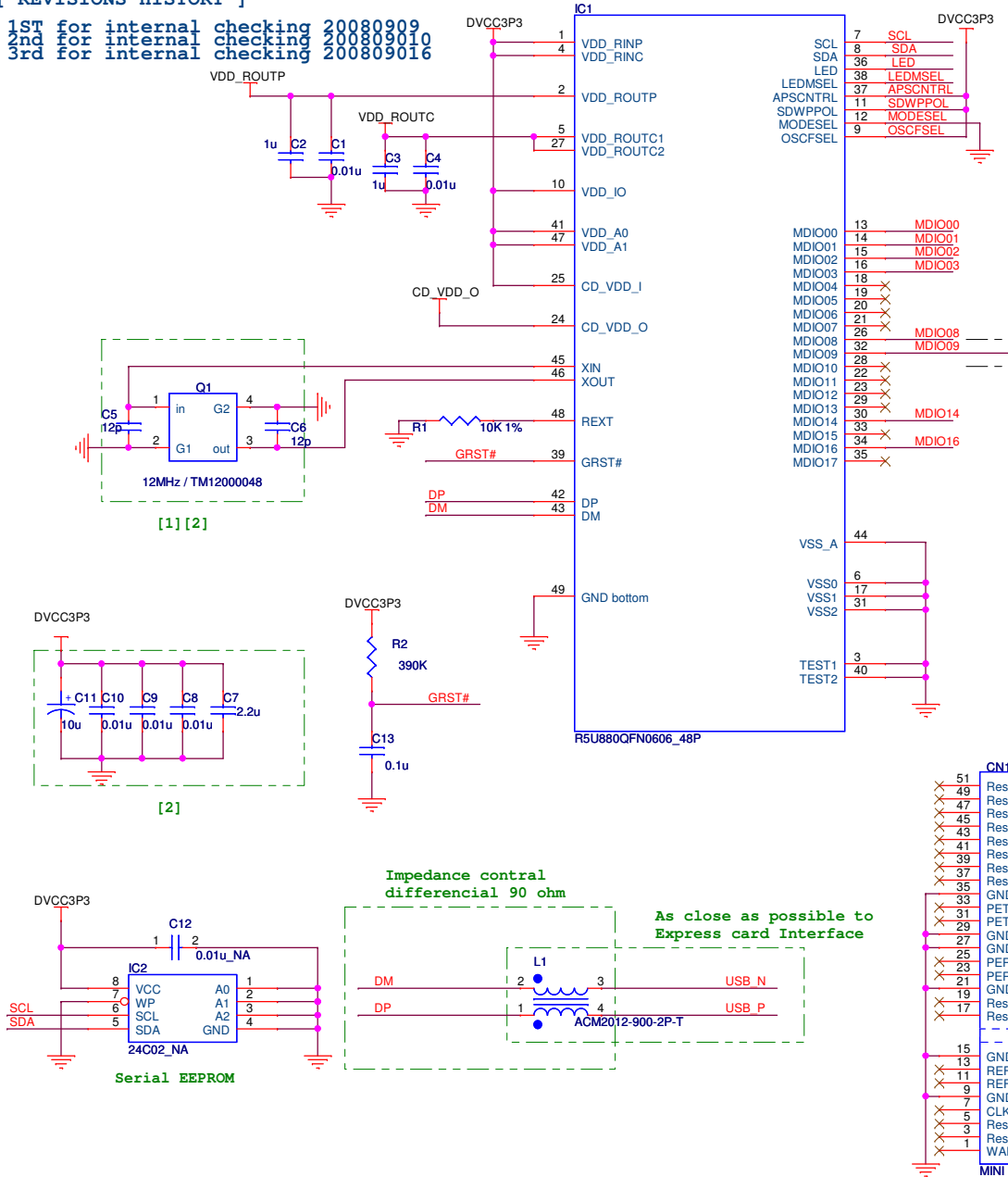
function	setting	default
OSCFSEL	PLL basic Clock	H:12MHz/ L:48MHz
MODESEL	Test for RICOH	-----
SDWPPOL	WP-Polarity Sel	H: high enable /L:low enable
APSCNTRL	APS Setting	H: APS enable /L:APS disable
LEDMSSEL	Led Control Sel	H: Access->Blink L:card inserted->LED on, Access->Blink

Media controller Pin (MDIO) Assignment

NO	Name	SD	MMC	MS	XD
1	MDIO00	SD_DAT0	MMC_DAT0	MS_DAT0	XD_DAT0
2	MDIO01	SD_DAT1	MMC_DAT1		XD_DAT1
3	MDIO02	SD_DAT2	MMC_DAT2		XD_DAT2
4	MDIO03	SD_DAT3	MMC_DAT3	MS_DAT3	XD_DAT3
5	MDIO04		MMC_DAT4	MS_DAT4	XD_DAT4
6	MDIO05		MMC_DAT5	MS_DAT5	XD_DAT5
7	MDIO06		MMC_DAT6	MS_DAT6	XD_DAT6
8	MDIO07		MMC_DAT7	MS_DAT7	XD_DAT7
9	MDIO08	SD_CMD	MMC_CMD	MS_BS	XD_WE#
10	MDIO09	SD_CLK	MMC_CLK	MS_CLK	XD_RE#
11	MDIO10				XD_WP#
12	MDIO11			MS_DAT1	XD_CLE
13	MDIO12			MS_DAT2	XD_ALE
14	MDIO13				XD_CE#
15	MDIO14	SD_WP#			XD_RB#
16	MDIO15			MS_INS#	
17	MDIO16	SD_CD#	MMC_CD#		
18	MDIO17				XD_CD#

Cards Pin Assignment

NO	SD/MMC	MS	XD	SC	
1	DAT3	VSS1	CD	VCC	
2	CMD	BS	R/B#	RST	
3	VSS1	DAT1	RE#	CLK	
4	VDD	DAT0	CE#	RFU (C4)	
5	CLK	DAT2	CLE	GND	
6	VSS2	INS	ALE	VFP	
7	DAT0	DAT3	WE#	I/O	
8	DAT1	SCLK	WP#	RFU (C8)	
9	DAT2	VCC	GND		
10	DAT4	VSS2	D0		
11	DAT5	DAT4	D1		
12	DAT6	DAT5	D2		
13	DAT7	DAT6	D3		
14		DAT7	D4		
15			D5		
16			D6		
17			D7		
18			VCC		



- [1] CLOCK LINES ARE RECOMMENDED TO BE SHIELDED BY GND ETCH.
- [2] AS CLOSE AS POSSIBLE TO R5U880 TERMINAL.
- [3] AS CLOSE AS POSSIBLE TO MEDIA SLOT TERMINAL.

www.HWtools.net		
Title	Mini PCIE SDHC Cardreader	Designer: Gerry
Size	Document Number	Rev
B	MR04_Schematic	1.1
Date:	Tuesday, May 26, 2009	Sheet 1 of 1