

# PM1061R RAID User Guide



Professional I/O adapter provider

**Bplus Technology Co., Ltd.**

Roger Tseng

Bplus Technology Co., Ltd.

2015/10/22

[roger@bplus.com.tw](mailto:roger@bplus.com.tw)

## PMR1061R

Dual SATA III RAID to mini-PCIE 2.0 Adapter



## Catalog

PMR1061R .....	1
Catalog .....	2
PM1061R setting guide .....	3
RAID Test Result .....	4



## PM1061R setting guide

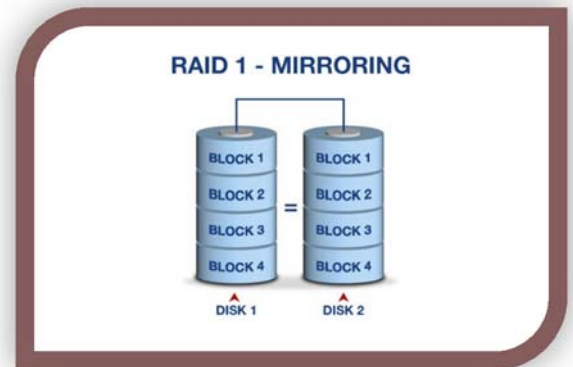
PM1061R has three Jump : J3/J4/J5 ◦

J3 and J5 use for RAID function setting ◦

J4 use for FW setting ◦ default is

Firmware mode.

(If setting to OpROM mode, can't work normally)

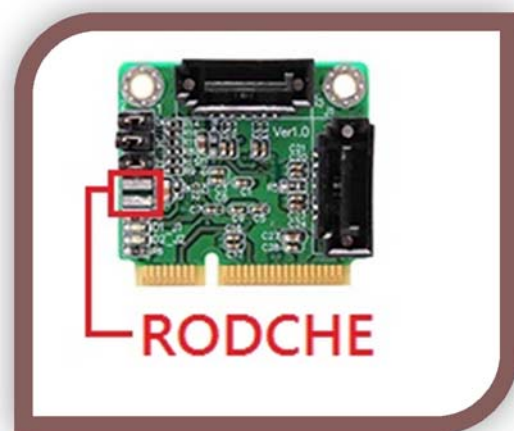


J4	V	Firmware Mode
	X	OpROM mode

Mode	J3	J5
AHCI	X	X
RAID 1	X	V
RAID 0	V	X
SPAN	V	V

After setting J3/J5 Jumper, need to do RODCHE Reset (short 3 sec). for finish RAID function change.

RODCHE: RAID change Reset



## RAID Test Result

AHCI: Two Disk, Port Multiplier mode

The screenshot displays the Windows Disk Management console and two CrystalDiskMark 3.0.2 x64 performance windows. The Disk Management window shows three disks: Disk 0 (300 MB), Disk 1 (223.44 GB), and Disk 2 (223.44 GB). A RAID 0 array is configured across Disk 1 and Disk 2, labeled as 'New Volume (D:)'. The CrystalDiskMark windows show the following performance metrics:

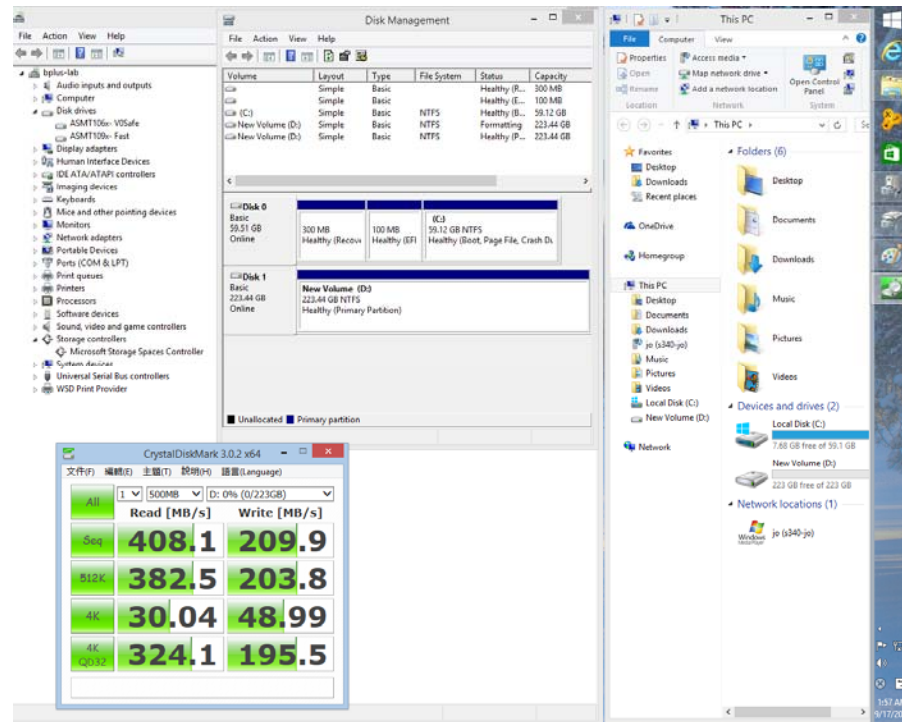
Test	Read [MB/s]	Write [MB/s]
All	397.0	309.0
Seq	400.8	305.1
512K	374.4	307.0
4K	30.96	58.52
4K (QD32)	222.6	250.5

RAID 0: One Disk, consists of striping, Fast, sum of the capacities of the disks

The screenshot displays the Windows Disk Management console and a CrystalDiskMark 3.0.2 x64 performance window. The Disk Management window shows two disks: Disk 0 (300 MB) and Disk 1 (447.00 GB). A RAID 0 array is configured across both disks, labeled as 'New Volume (D:)'. The CrystalDiskMark window shows the following performance metrics:

Test	Read [MB/s]	Write [MB/s]
All	416.8	408.6
Seq	382.7	394.1
512K	29.89	57.79
4K	348.7	301.4

## RAID 1: One disk, consists of data mirroring, Safe mode



## SPAN: ONE DISK, sum of the capacities of the disks, JBOD (Span) mode

