

S5EX Extender ver1.0

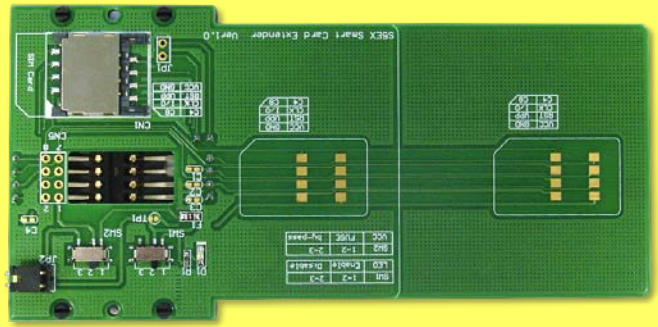
SmartCard Extender

The S5EX Extender ver1.0 is a debug and signal detection tool for Smartcard. It allows a Smartcard to be extended from the host slot for full access to the all of signal pins.

It's especially designed to save valuable labor and time in the production environment. The S5EX is designed to minimize the signal degradation effects of the extender by proven design techniques. Separate VCC and ground planes provide a low inductance path to the host's power

The SC extender has the function of over-current protection with PTC fuse. A clearly marked jumper header allows probing of all of signal pins. It's also a powerful tool for engineers, or use for factory test protection.

The S5EX extender is constructed of high quality components for years of trouble free service.



Key Features

- Test connector for all of signal and power pins.
- Any signal can be isolated with test pin.
- Power and ground can be isolated for power measurements.
- LED indicates power status.
- Adds LED enable switch and fuse enable switches.
- VCC bypassed for clean power.
- Supports both Smartcards and SIM cards.
- High quality connectors for long service life.
- Over-current protection with PTC fuse
- SIM Card Passive adapter unnecessary

Product Specifications

Support Card Type:

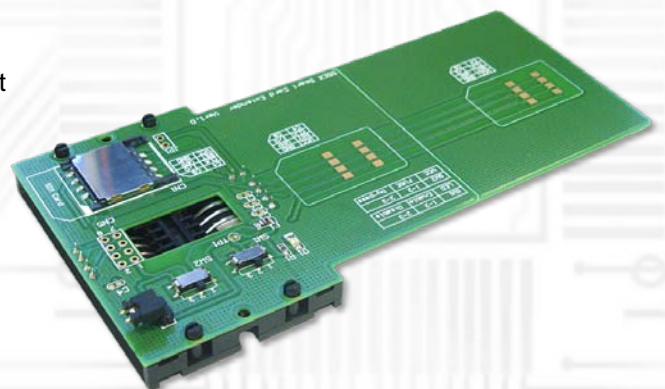
- Reads from and writes to all ISO7816-1 to -4 microprocessor smart cards (T=0,T=1) and all memory cards and supplies the cards with 5V,3V or 1.8V.
- Reads both EMV and non-EMV ISO cards.

Dimension:

Width : 62mm

Length : 126.5mm

PCB Thickness 0.8mm



As a New manufacturer of quality computer connectivity products since 2009/Mar, BPLUS technology brings to market a broad range of upgrade products. These products bridge the connection between Desktop/Notebook systems and external peripherals.

Bplus
Bplus Technology

Address: 5F, NO. 63, ZHOU-TZYY
ST. NEI-HU, TAIPEI, TAIWAN, R.O.C
Tel: 886-2-77210550
Fax: 886-2-87974200
Email: sales@bplus.com.tw
Web: <http://www.bplus.com.tw/>