

# Dual CDMA/LTE module to USB outdoor adapter U2M2A brief

The U2M2A adapter is designed for desktop/Embedded system that convert 3G/4G wireless Mini-Card to USB port.

You can insert your USB type Mini card such as GSM, HSPA(3.5G), GPS, LTE cards to this adapter then plug to USB port through USB cable. It support dual CDMA/LTE module to USB interface, if the USB power is not enough, it also support 12V power input.

U2M2A is a Dual CDMA/LTE module to USB outdoor adapter, the cable of it can OEM(MAX 30M), there is a shield box to protect it. The shield box can make protect module in the rainy day, Because it uses the waterproof design. It can make sure U2M2A Adapter work normal in the outdoor.

Compatible with three different ways, work with PCduino, work with Audino, work as a USB modem.

## Function

- USB connection to desktop or notebook PC
- Supports USB interface of Mini-Cards such as 2G GSM, GPRS, 3G, CDMA, WLAN, WWLAN, HSPA MODEM, GPS, 4G WiMAX, LTE, and Mini-Card to desktop PC.
- Support SIM card connector.
- Support U.FL/IPX to N (16M) RF cable adapter
- [Antenna Products \(Click for Bplus Antenna Comparison link\)](#)
- [Linux S/W support](#)
- [3G/LTE module UART output support.](#)
- [Arduino shield support.](#)
- [PCduino shield support.](#)

## Specification

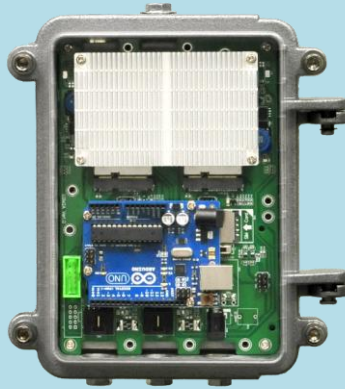
- Case Dimension: 180 x 130 x 70 mm (L x W x H)
- PCI Express Mini Card Electromechanical Specification Revision 1.2
- Universal Serial Bus Specification Revision 2.0
- Full / Half -Mini Card dimension.
- SIM Connector for CDMA HSDPA/HSUPA,UMTS, GSM, GPRS, EDGE
- Operating temperature -40 ~ 85°C
- USB cable length maximum of 30M.
- Waterproof: IP66

## U2M2A

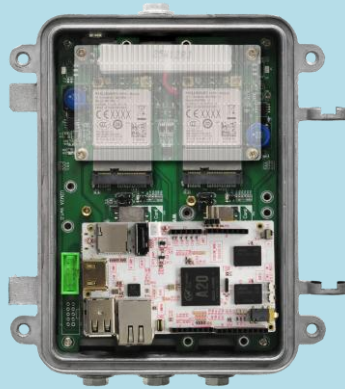


Use case

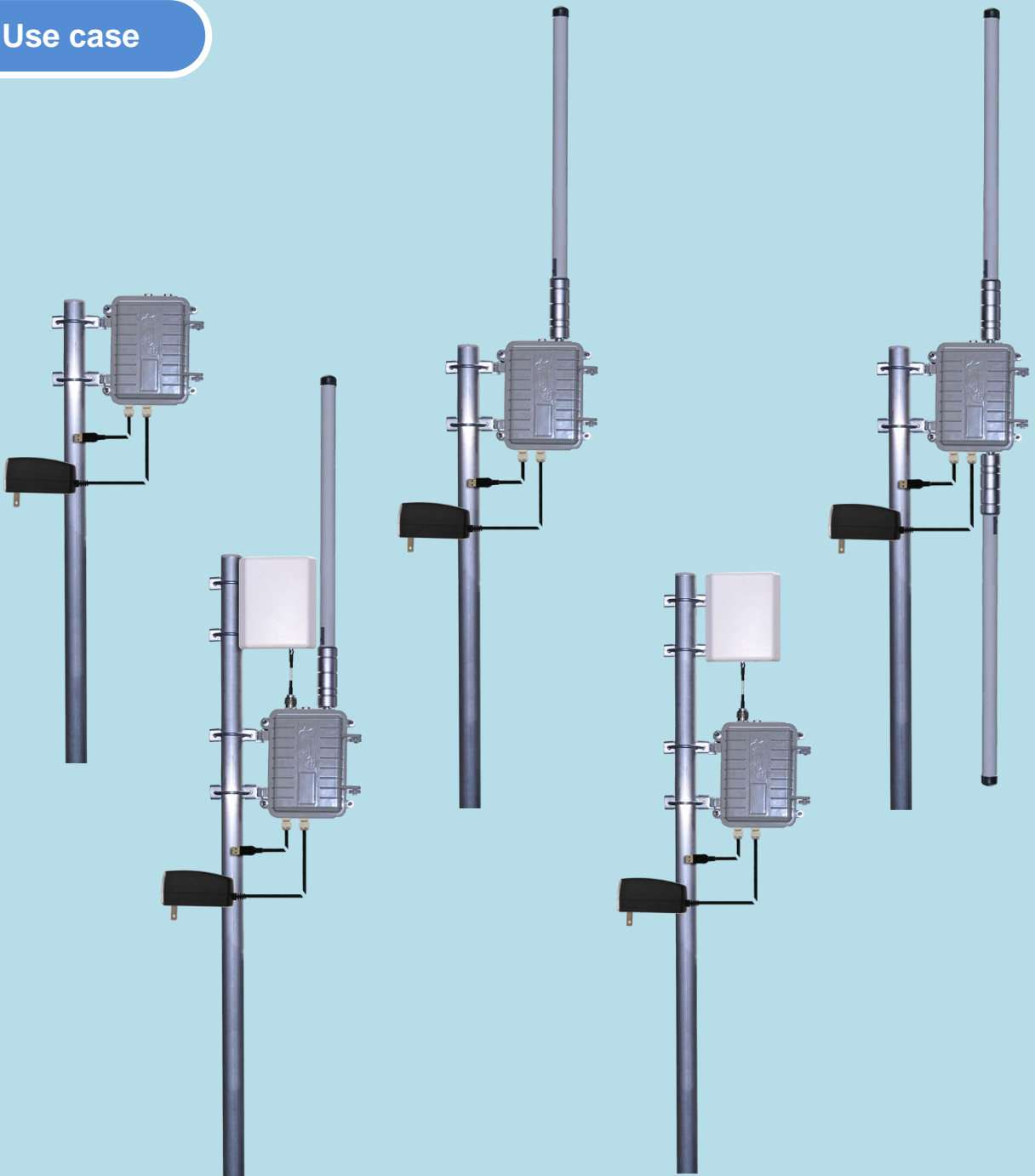
Arduino



PCduino



Use case



## Module Compatibility

Module name	Sierra EM7355(Gobi5000)	Sierra MC7710	Huawei MU609	Huawei ME906C
<b>AIR INTERFACE</b>				
	LTE, HSPA+, GSM/GPRS/EDGE, CDMA	LTE,HSPA+,GSM/GP RS/EDGE	UMTS/HSPA+ , GSM/GPRS/EDGE	LTE,DC- HSPA+/HSPA+/HSPA /UMTS EDGE/ GPRS/GSM
<b>DATA SPEED</b>				
Peke Download Rate	150 Mbps	100 Mbps	14.4 Mbps	100Mbps
Peak Upload Rate	50 Mbps	50 Mbps	5.76 Mbps	50Mbps
<b>APPROVALS</b>				
Regulatory	FCC, PTCRB, CDG, NCC	CE, GCF-CC, NCC	FCC, CCC, CE, RoHS	CE, FCC, GCF RoHS Compliant/ Halogen free Operator TA: Vodafone, Telefonica, Telstra, TMO
Carrier	AT&T, Verizon, Sprint	T-Mobile		Vodafone, Orange, DT, Telstra, Swisscom
<b>CPU PERFORMANCES</b>				
IO voltage	1.8V	1.8V	3.3V	Supply voltage range:3.135V~4.4V (3.3 V recommended)
INTERFACES	mPCIe	mPCIe	mPCIe	M.2
USB	USB 2.0 High Speed	USB 2.0 High Speed	USB 2.0 High Speed	USB 2.0 High Speed
Reset	V		V	
SIM Interface	1.8V or 3V	1.8 or 3V	1.8V or 3V	1.8V or 3V
<b>ANTENNA</b>				
Connectors	Main, Aux/GNSS, GNSS		Main, Aux/GNSS, GNSS	Main, GNSS
Antenna interface	3	3	3	2
<b>LOCATION SOLUTION*</b>				
	Standalone GPS, A- GPS, GPS XTRA, Glonass	Standalone, A-GPS, gps XTRA,Glonass	Standalone GPS, A- GPS,	GPS/Glonass GNSS: GPS Standalone, A-GPS, GPS XTRA, Glonass
<b>CONTROL OPTIONS</b>				
	GOBI API	AT Commands, Gobi API	Huawei API	Huawei API
<b>OS Support</b>				
	Windows 8、Windows 7、Android、Linux	Windows Mobile 6.5、Windows CE 6.0、Android、 Linux	Linux、Android	Windows 7/Windows 8/Android 4.0 or above
DEVICE DIMENSIONS	42 x 30 x 2.3 mm	51 x 30 x 4.75mm	51 x 30.4 x 3.4 mm	42 x 30 x 2.3 mm