

**USBMS-6300V
USER MANUAL**



1st chapter product description

Introduction:

The USBMS-6300V USB MODEM is a complete 3.5G enabled wireless USB data modem designed to offer high-speed wireless connectivity for Windows notebook and desktop computers on HSUPA networks. It is easy to use USB connector and the ability to roam globally on tri-band UMTS and GSM, EDGE, GPRS, WCDMA(HSUPA) networks. It enables connection to internet **download speed up to 7.2Mbps and upload to 5.76Mbps.**

Standard SIM card Push Push connector is provided.

Product: See Pic 1



Pic 1

2nd chapter specification

● USBMS-6300V

Features:

- Power supply: 5V
- USB mini type-B connection to desktop or notebook PC.
- Supports system bus interface: USB.
- Support Voice function. Add MIC and EAR connector.
- Support SIM card Push Push connector.
- Support U.FL/IPX to SMA pigtail Wifi RF cable adapter.
- 800-960MHZ, 1710-2170MHz 2dBi antenna 2PCS.

Frequency Range:

- GSM850: 824~894MHz.
- E-GSM900: 880~960MHz.
- DCS1800: 1710~1880MHz.
- PCS1900: 1850~1990MHz.
- WCDMA850: 824–849 MHz (Tx), 869–894 MHz (Rx).
- WCDMA1900: 1850–1910 MHz (Tx), 1930–1990 MHz (Rx).
- WCDMA2100: 1920–1980 MHz (Tx), 2110–2170 MHz (Rx).

Support features

Application interface	NDIS interface support(Windows) AT command interface (27.007 standard, plus proprietary extended AT commands)
Short message Service	Send and receive (mobile originate and mobile terminate) New message notification Message sorting Multiple recipients Save contact details
Phone book	Supports release 99 phone book features
Data speed	HSUPA uplink up to 5.76Mbps HSDPA downlink up to 7.2Mbps WCDMA (UMTS) uplink data rate up to 384kbps EDGE data up to 237kbps DL and 118Kbps UL, class 12 GPRS data up to 85.6Kbps DL and 42.8Kbps UL
Environmental features	Normal Operation: -20°C to +60°C Restricted Operation: -30°C to +70°C Storage: -40°C to +85°C

3th chapter hardware installation

Required material:

USBMS-6300V(3G USB Wireless MODEM)	X1
3G SIM Card	X1
USB-Y-Line-2.0	X1
USB to DC Power Cable(5V)	X1
IPX to SMA cable	X2
Multi Media Earphone	X1



Pic 3

As shown in the pic 3, assemble antenna, then insert SIM card, link to PC by USB cable. If your want use voice function, please insert MIC line, Ear Line into the corresponding interface.

USBMS-6300V needn't external power normally.

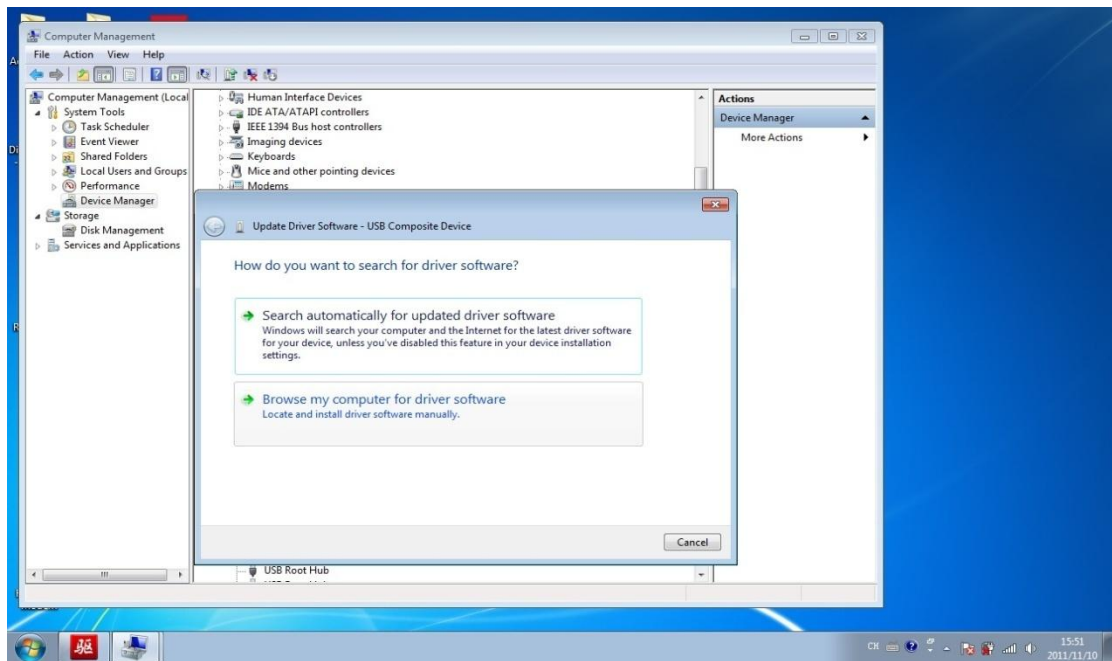
4th chapter Driver installation

Driver download:

<http://www.bplus.com.tw/Adapter/USBMS-6300V.html>

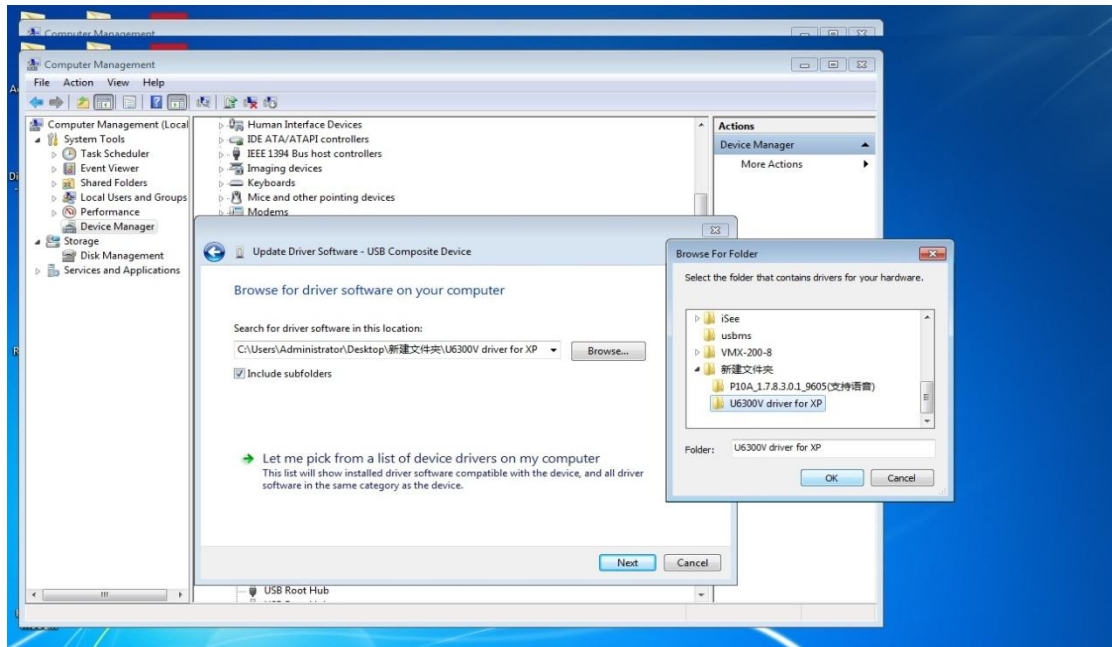
Windows 7 for example:

Link USBMS-6300V to PC by USB cable. System will automatically find new hardware, then eject “Found new hardware wizard”, Select “browse my computer for driver software”, step to the next, See Pic 4:



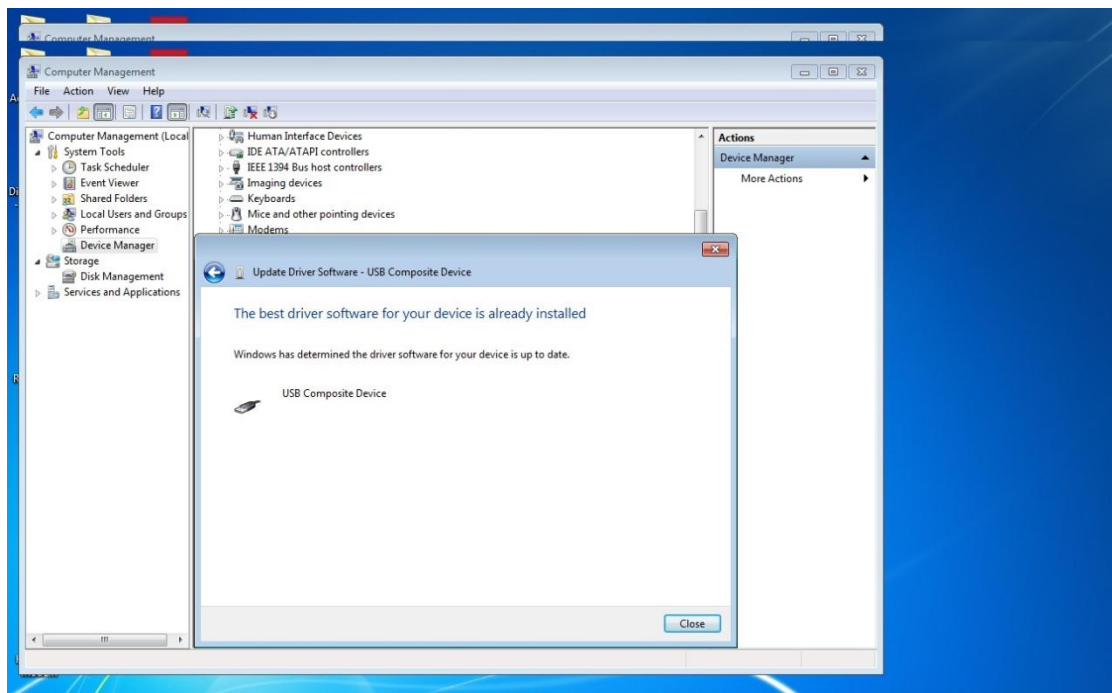
Pic 4

Click “Browse” and select the driver folder path, then click next to the next step, See Pic 5:



Pic 5

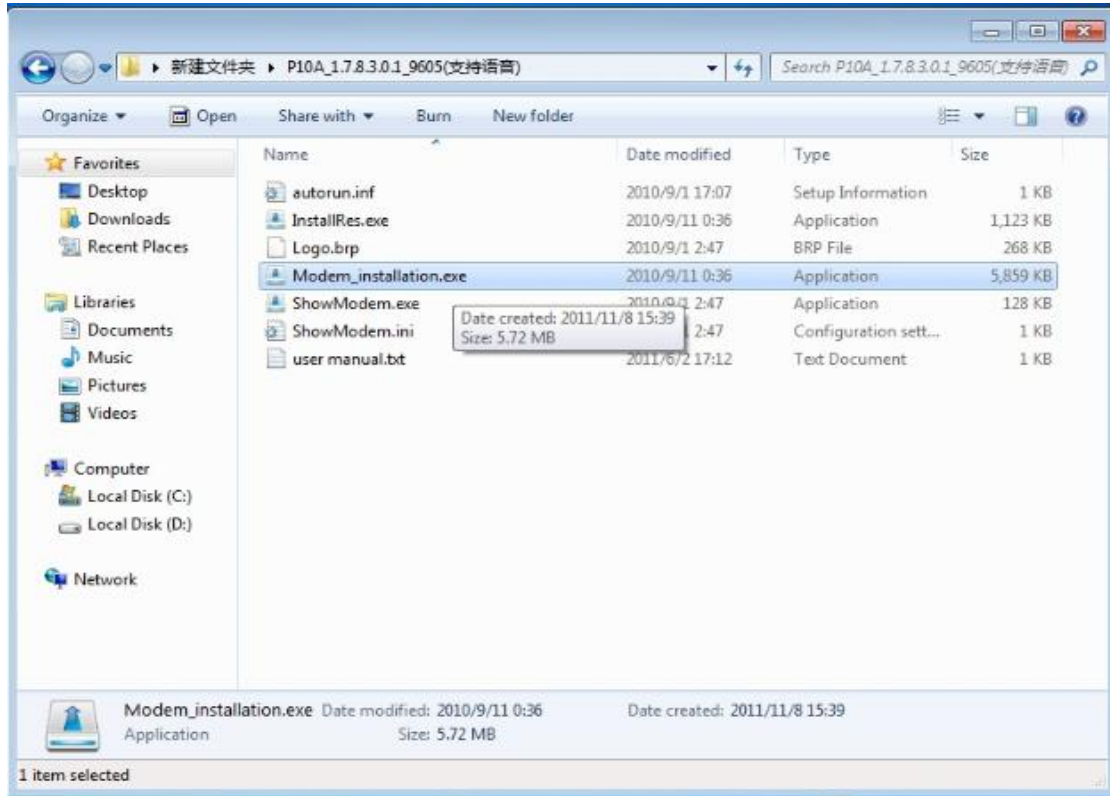
See Pic 6, Click “close” and finish the installation.



Pic 6

5th chapter Software installation

Double click “Modem_installation.exe”, See Pic 7, Start installation:



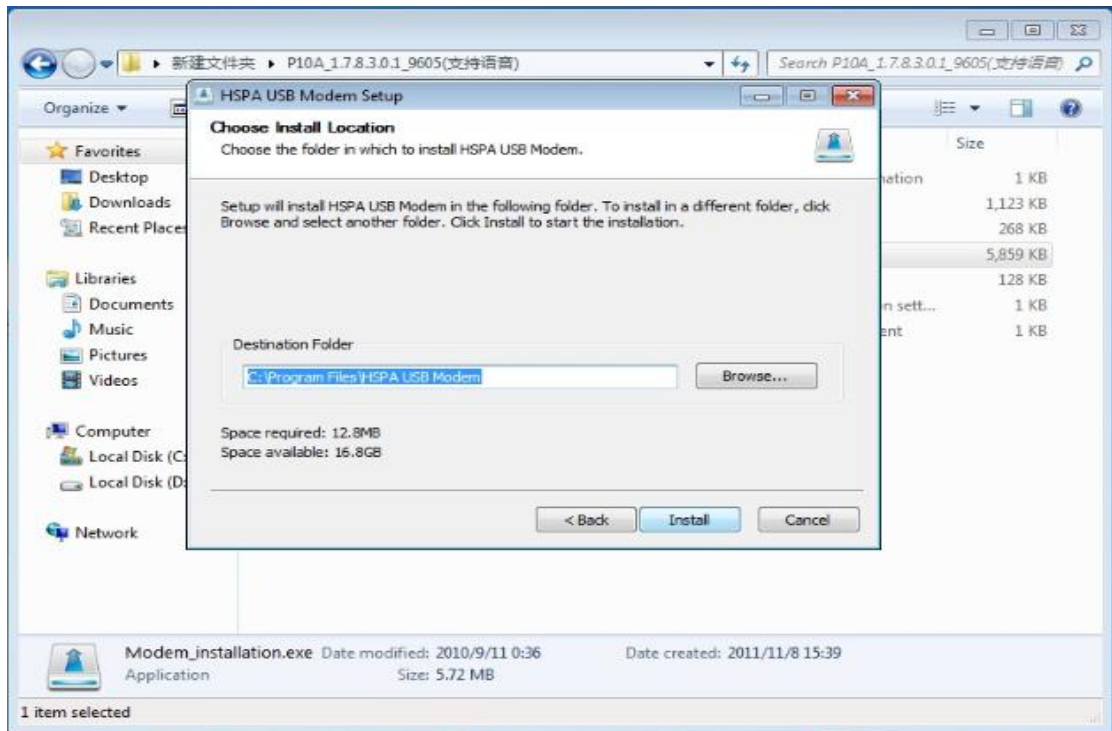
Pic 7

See Pic 8, click next to start installation:



Pic 8

Click “Browse” to select the installation folder path, See Pic 9:



Pic 9

Click finish and reboot system to end the installation, See Pic 10:

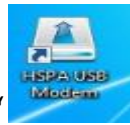


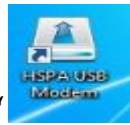
Pic 10

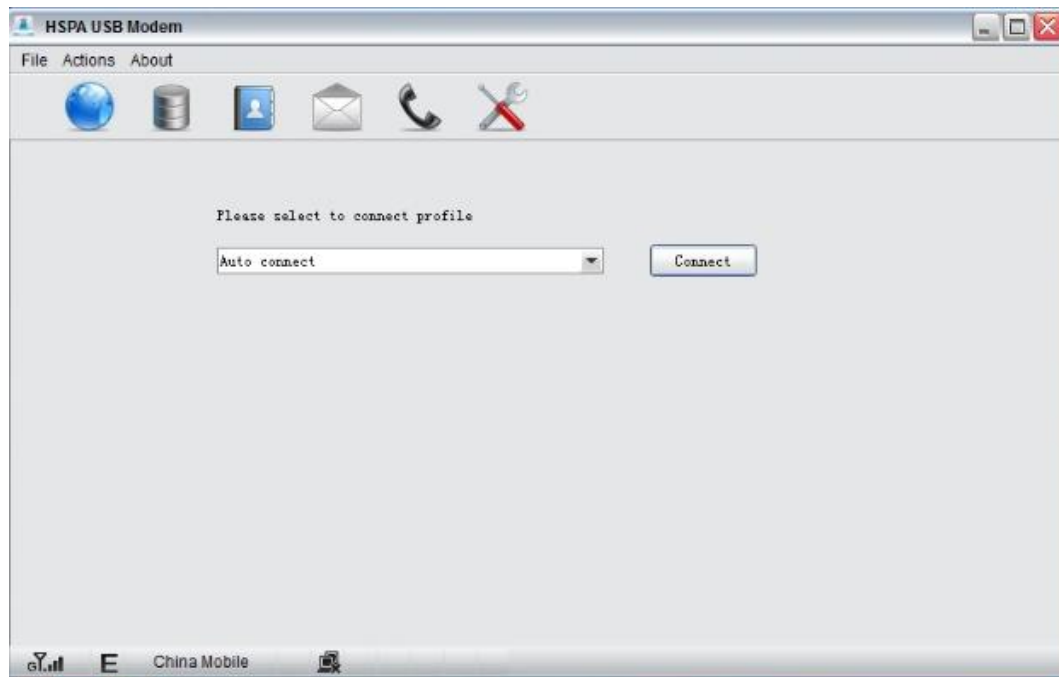
6th chapter How to use software

- Link up to network

Make sure SIM card is inserted to USBMS, Power on the USBMS.

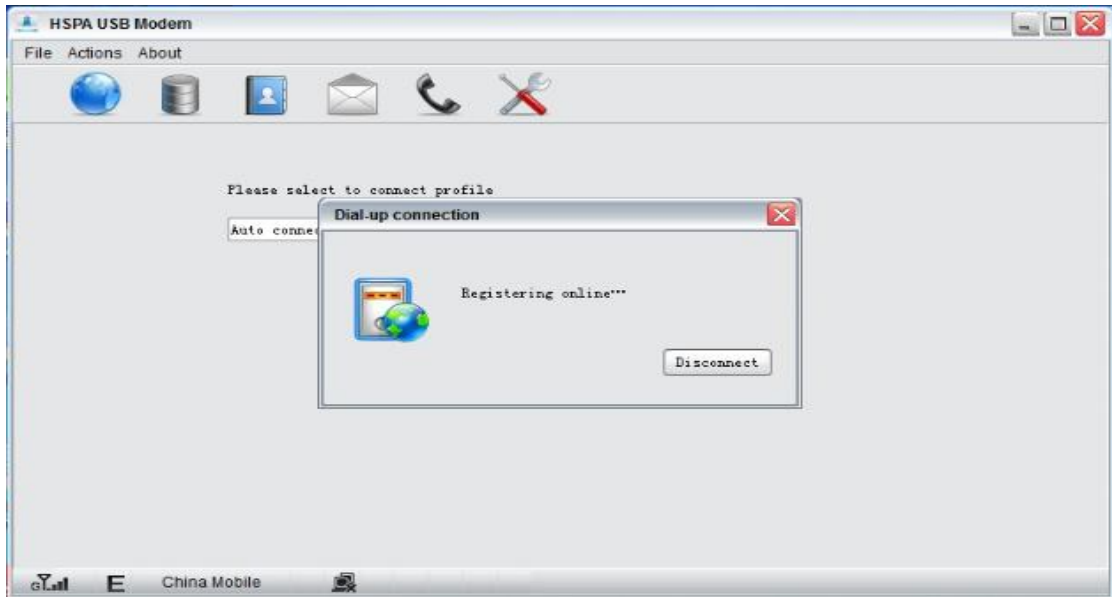


Double click “” on the desktop, then open the software, See Pic 11, main Application window:



Pic 11

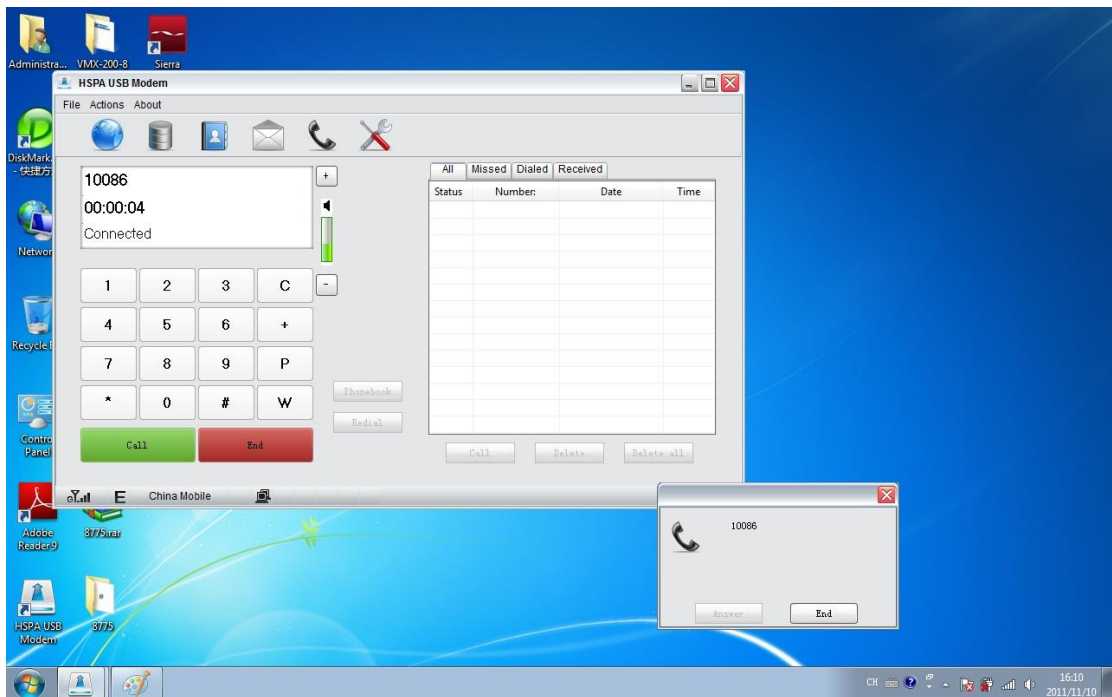
Click “Connect” to connect to the mobile network, See Pic 12:



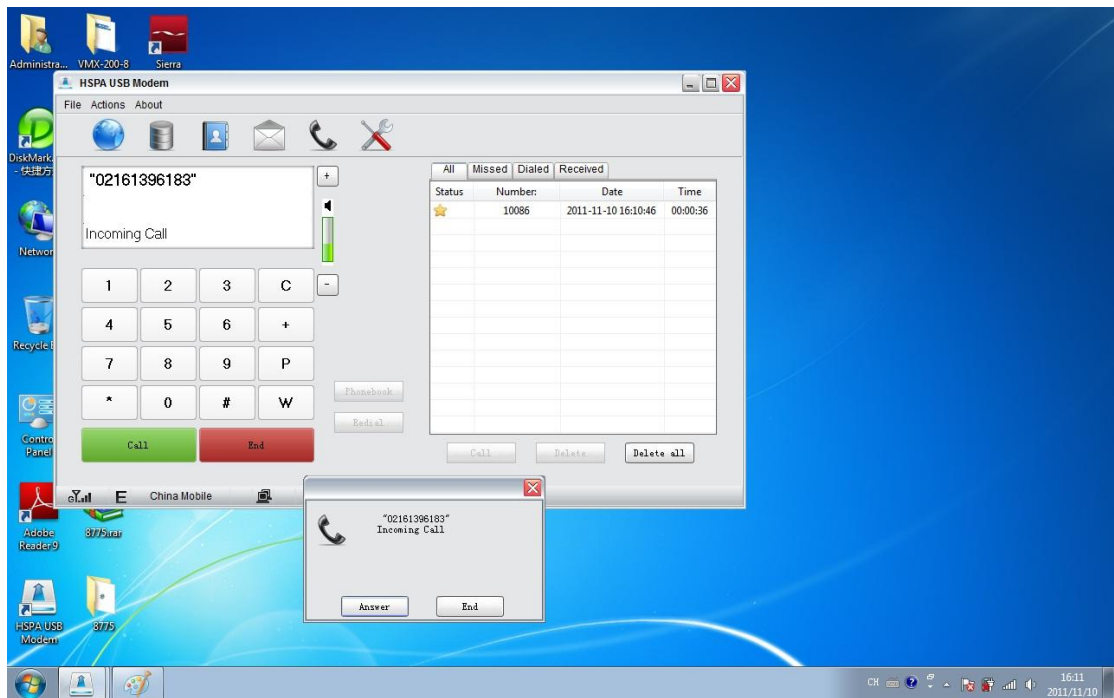
Pic 12

- **Voice function**

Be sure both headphone and MIC phone connect correct. Then you can call or answer the phone like your cell phone using.



Pic 13



Pic 14

By the way, you can use EAR/MIC jack on your PC instead for voice function.