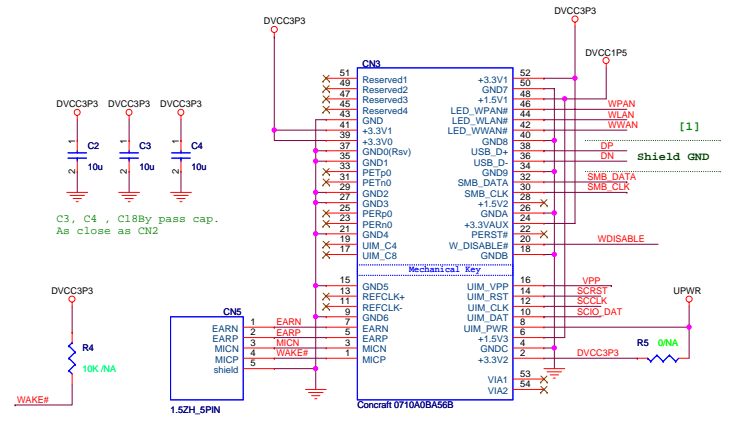


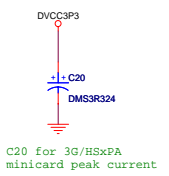
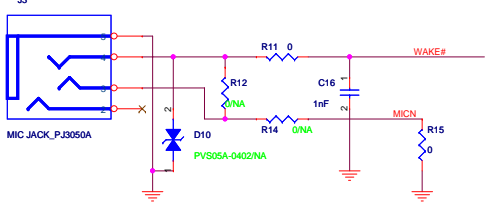
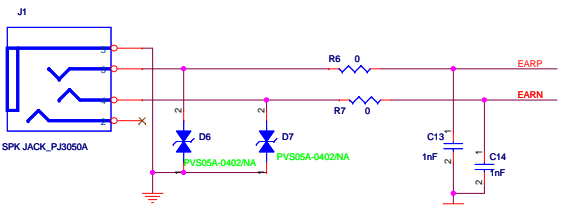
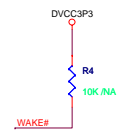
# Wireless USB Mini Card Adapter ver1.2

Model:USBMS-N15

[1] Impedance control required for DP DN : 90ohm

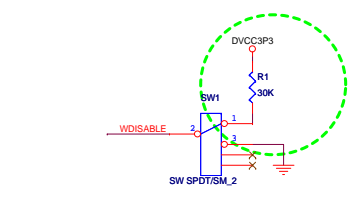
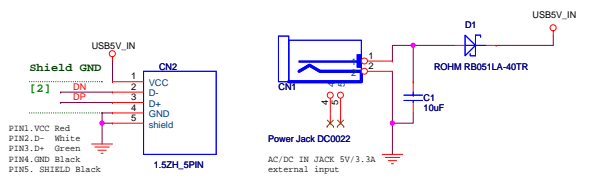


C3, C4, C18 by pass cap. As close as CN2

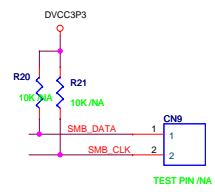
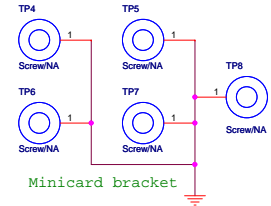
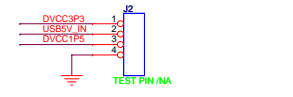
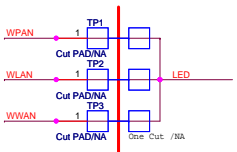


C20 for 3G/HSPA minicard peak current

Discharge circuit

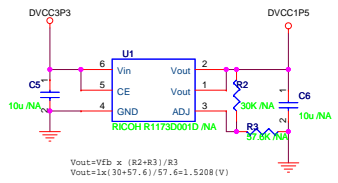
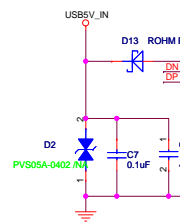


SW1 Wireless ENABLE DISABLE



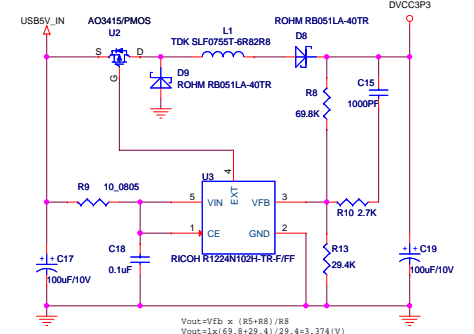
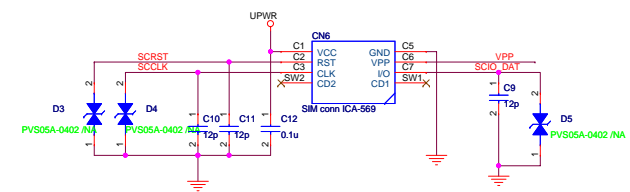
TEST PIN/NA

## AC100~240V in DC5V/3A



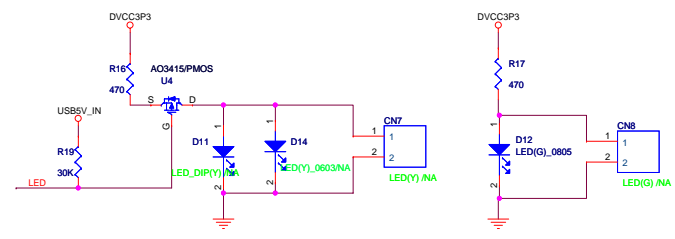
Vout=Vfb x (R3+R1)/R3  
Vout=1.4338\*57.6/57.6=1.5208(V)

V/R circuit 3.3V to 1.5V for mini PCI-E 1.5V/1A



Vout=Vfb x (R5+R8)/R8  
Vout=1x(69.8+29.4)/29.4=3.374(V)

5V to 3.3V/2.8A DC2DC circuit diagram



CN7, CN8 for external assembly LED

|                                 |                             |                      |        |
|---------------------------------|-----------------------------|----------------------|--------|
| Title                           |                             |                      |        |
| Wireless MiniCard to USB Reader |                             | Design by:Gerry Chen |        |
| Doc C                           |                             |                      |        |
| Document Number                 | www.Bplus.com.tw            | Rev 1.0              |        |
| Date:                           | Wednesday, October 26, 2011 | Sheet                | 1 of 1 |